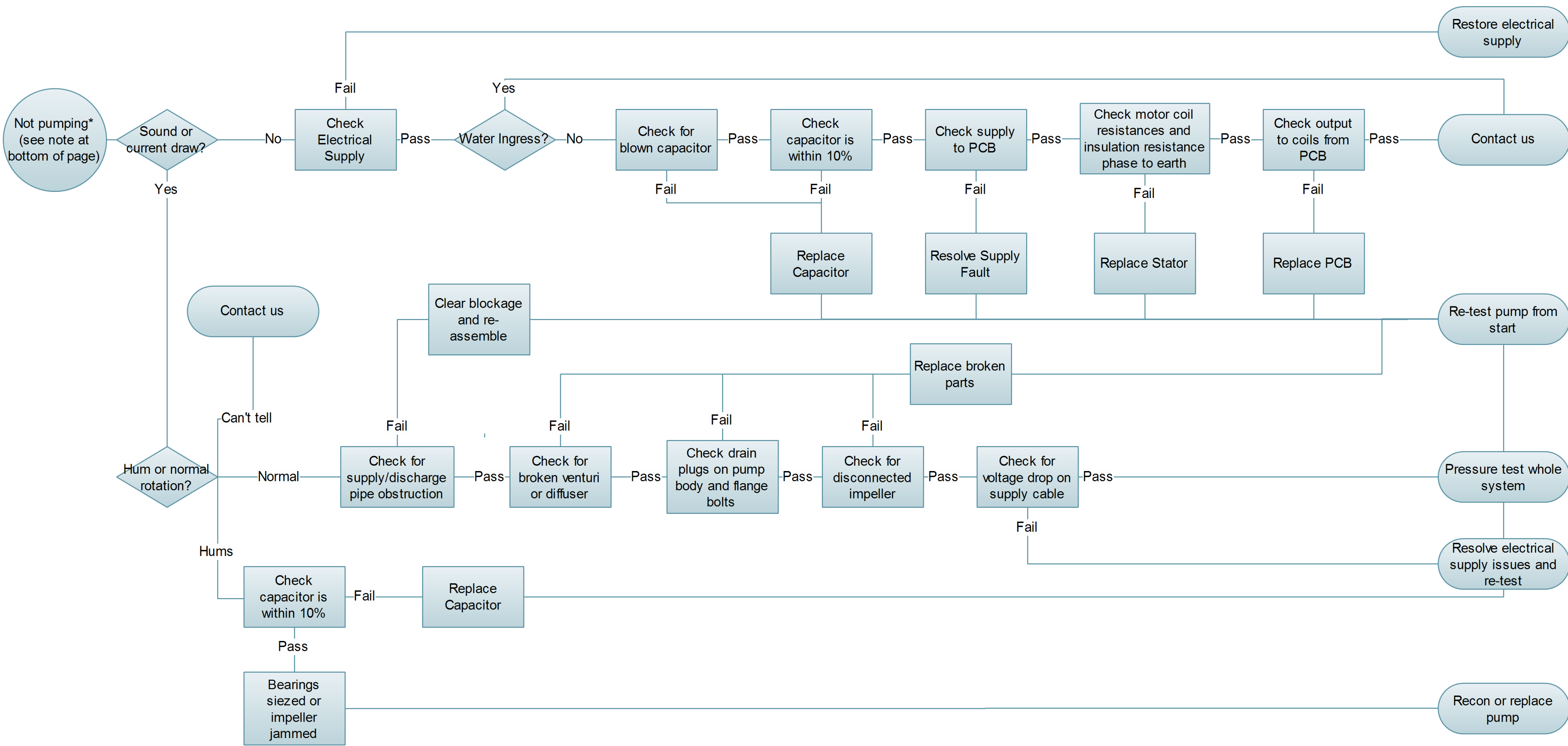


Steelpumps Troubleshooting Flowchart for Technicians

v1.2 August 2016



* If the pump is submerged, check that the supplied NRV is fitted directly to the pump inlet. A floating intake with NRV is not sufficient as the NRV must be connected directly to the pump inlet.

If the pump is surface-mounted the NRV may be fitted at the end of a run of rigid suction pipe.

For horizontal pumps the intake is on the end of the pump and the outlet projects from the body nearer to the rear electrical cover.

For vertical pumps the inlet is the lowest connection and the outlet is the highest.



Steelpumps UK Ltd
Unit 9, Parc Teifi, Cardigan, SA43 1EW
Tel: 01239 623506
www.steelpumps.co.uk

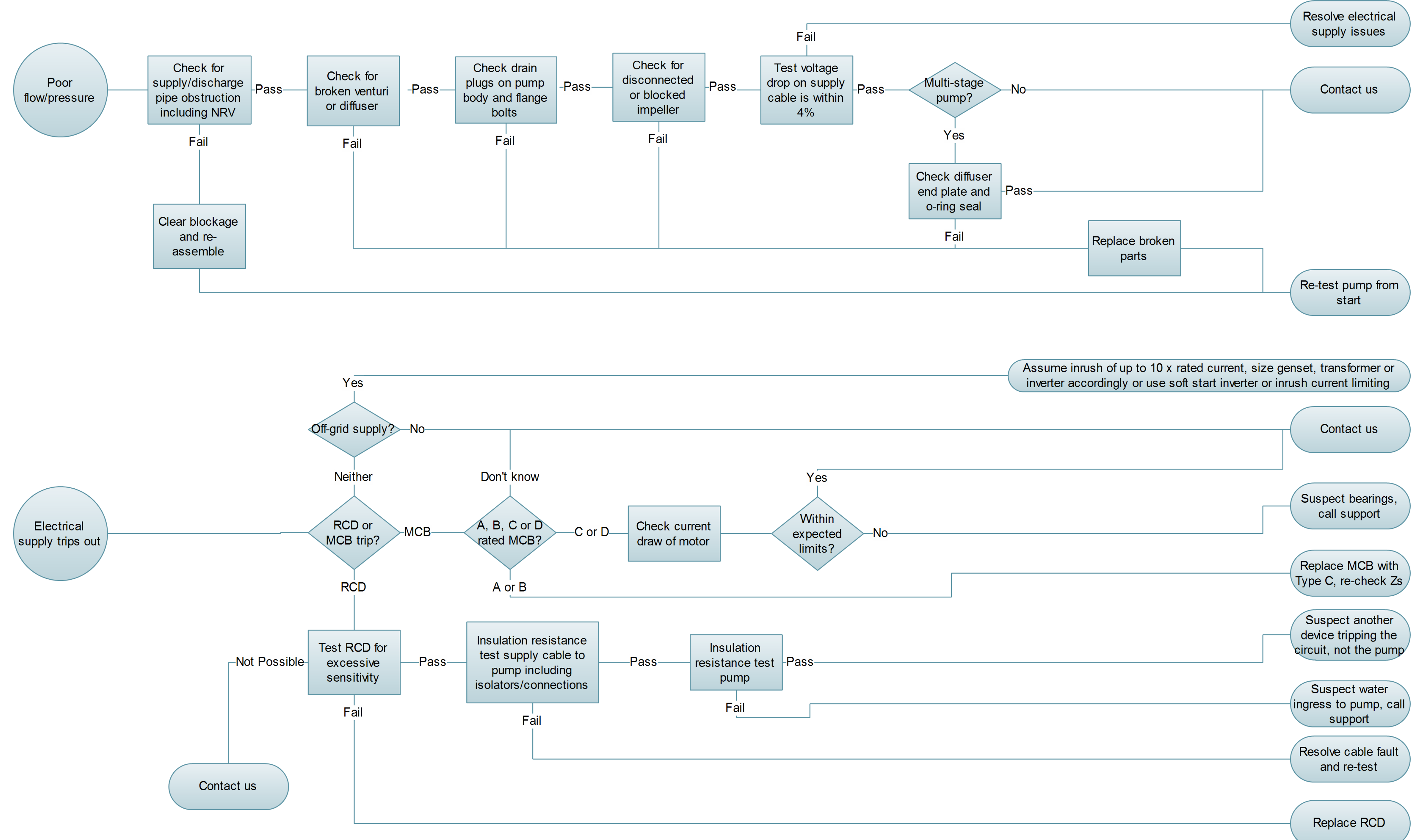
sales@steelpumps.co.uk

This troubleshooting guide is primarily intended for technicians and competent persons only for resolving problems with the SteelPumps range. If you do not understand any of the terms within the guide or get stuck please send an email with photographs of your installation to sales@steelpumps.co.uk. You can also contact us for advice on 01239 623506, but please be aware that we may have to call you back when an Engineer is available.

Important warranty information: Your two year Warranty is not valid if the pump has been disassembled in any way. The Warranty does not cover malfunctioning due to a failure to properly install or commission the pump in accordance with the installation instructions. Correct installation is particularly vital in the case of automatic pumps which will run excessively if the pressure drops in the delivery network.

Steelpumps Troubleshooting Flowchart for Technicians

v1.2 August 2016



Steelpumps UK Ltd
Unit 9, Parc Teifi, Cardigan, SA43 1EW
Tel: 01239 623506
www.steelpumps.co.uk

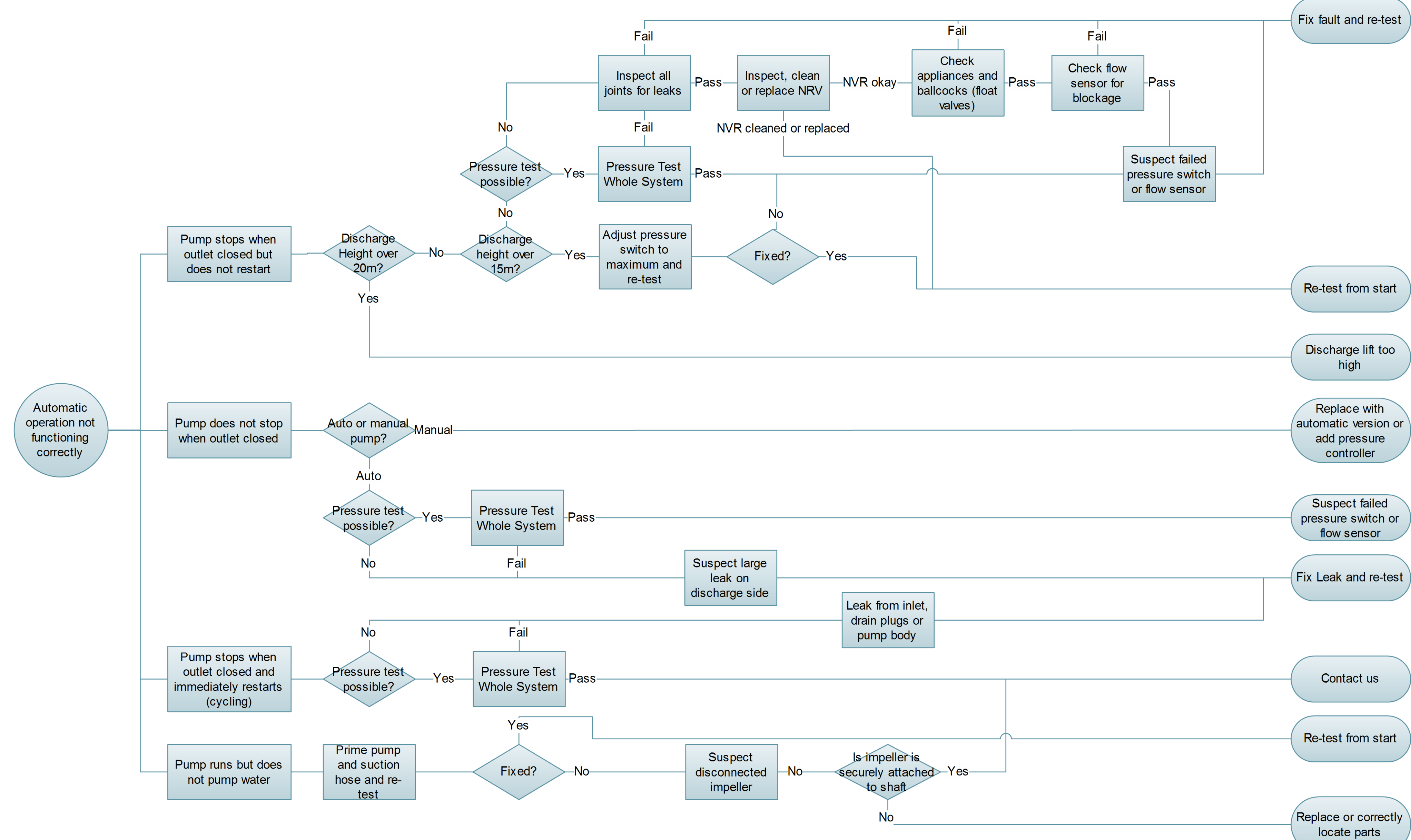
sales@steelpumps.co.uk

This troubleshooting guide is primarily intended for technicians and competent persons only for resolving problems with the SteelPumps range. If you do not understand any of the terms within the guide or get stuck please send an email with photographs of your installation to sales@steelpumps.co.uk. You can also contact us for advice on 01239 623506, but please be aware that we may have to call you back when an Engineer is available.

Important warranty information: Your two year Warranty is not valid if the pump has been disassembled in any way. The Warranty does not cover malfunctioning due to a failure to properly install or commission the pump in accordance with the installation instructions. Correct installation is particularly vital in the case of automatic pumps which will run excessively if the pressure drops in the delivery network.

Steelpumps Troubleshooting Flowchart for Technicians

v1.2 August 2016



Steelpumps UK Ltd
Unit 9, Parc Teifi, Cardigan, SA43 1EW
Tel: 01239 623506
www.steelpumps.co.uk

sales@steelpumps.co.uk

This troubleshooting guide is primarily intended for technicians and competent persons only for resolving problems with the SteelPumps range. If you do not understand any of the terms within the guide or get stuck please send an email with photographs of your installation to sales@steelpumps.co.uk. You can also contact us for advice on 01239 623506, but please be aware that we may have to call you back when an Engineer is available.

Important warranty information: Your two year Warranty is not valid if the pump has been disassembled in any way. The Warranty does not cover malfunctioning due to a failure to properly install or commission the pump in accordance with the installation instructions. Correct installation is particularly vital in the case of automatic pumps which will run excessively if the pressure drops in the delivery network.